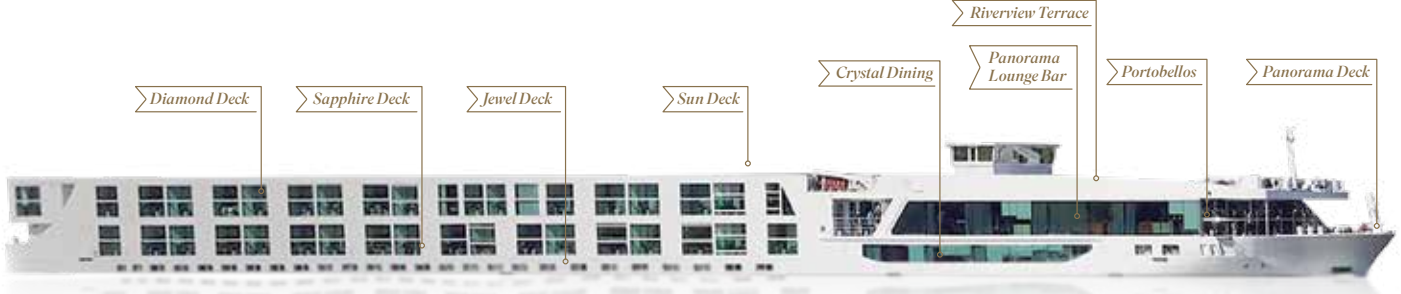


Rebuilt 2013 | Built 2008/2009/2011 | Length 443 feet | Passengers 167 | Cabins 84 | Crew 53 | Gross Tonnage 2,721



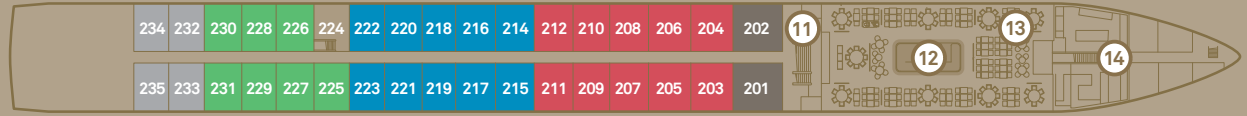
Sun Deck



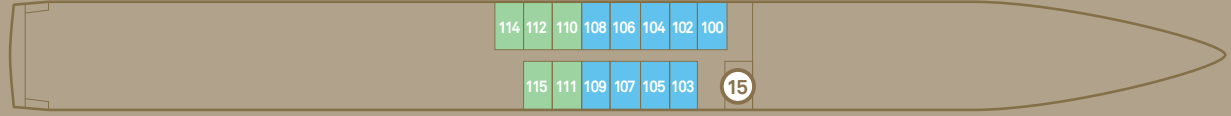
Diamond Deck



Sapphire Deck



Jewel Deck

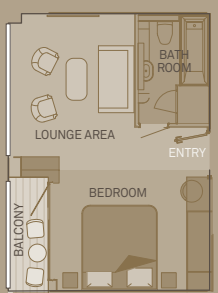


Deck Plan

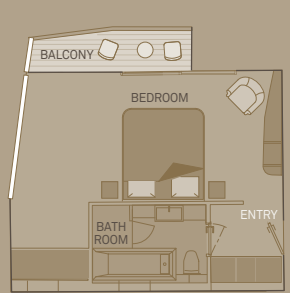
- 1 Riverview Terrace
- 2 Wheelhouse
- 3 Sun Deck
- 4 Walking Track
- 5 Panorama Deck
- 6 Portobellos Restaurant
- 7 River Café
- 8 Panorama Lounge & Bar
- 9 Gift Shop
- 10 Reception
- 11 Elevator
- 12 Crystal Dining
- 13 Table La Rive
- 14 Galley
- 15 Wellness Area

Cabin Categories

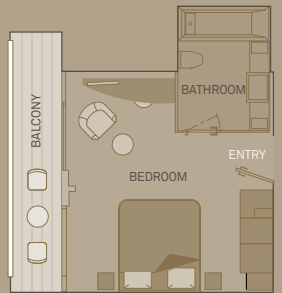
Diamond Deck		Sapphire Deck		Jewel Deck	
R	Royal Balcony Suite	PA	Balcony Suite	BJ	Junior Balcony Suite
RA	Royal Balcony Suite	A	Balcony Suite	BS	Single Balcony Suite
RJ	Junior Balcony Suite	B	Balcony Suite	B	Balcony Suite
RS	Royal Panorama Suite	BB	Balcony Suite	BB	Balcony Suite
P	Balcony Suite	BA	Balcony Suite	BA	Balcony Suite
PP	Balcony Suite	C	Balcony Suite	C	Balcony Suite
				D	Standard Suite
				E	Standard Suite



Royal Balcony Suite
29m²/315ft²
Including Scenic 'Sun Lounge'
R



Royal Panorama Suite
30m²/325ft²
Including Scenic 'Sun Lounge'
RS



Junior Balcony Suite
23m²/250ft²
Including Scenic 'Sun Lounge'
RJ BJ



Private Balcony Suite
19m²/205ft²
Including Scenic 'Sun Lounge'
P PA PP A B BB BA C



Standard Suite
15m²/160ft²
D E

The deckplan and cabin layout images are an indication only and may vary. Please refer to scenicusa.com for further information.